




The dynamic efficiency is **0.98** for all ratios

Input speed (n_1) = 1400 min⁻¹

Output speed n_2 [min ⁻¹]	Ratio i	Motor power P_{1M} [kW]	Output torque M_{2M} [Nm]	Service factor $f.s$	Nominal power P_{1R} [kW]	Nominal torque M_{2R} [Nm]	B5 motor flanges		B14 motor flanges				Output shaft  standard ø14	Ratios code 
							-B 63	-C 71	-O 56	-P 63	-Q 71			
682	2.05	0.37	5	2.0	0.73	10			C	C		1939	01	
595	2.35	0.37	6	2.1	0.76	12			C	C		1740	02	
500	2.80	0.37	7	2.0	0.75	14			C	C		1542	03	
414	3.38	0.37	8	2.0	0.75	17			C	C		1344	04	
298	4.70	0.37	12	1.7	0.64	20			C	C		1047	05	
225	6.22	0.37	15	1.5	0.55	23			C	C		956	06	
169	8.29	0.37	20	1.0	0.36	20			C	C		758	07	
142	9.83	0.25	16	1.0	0.24	16			C	C		659	08	

Motor flanges available
Flange motore disponibili

 **B) Supplied with reduction bushing**
Fornito con bussola di riduzione

B) Available on request without reduction bushing
Disponibile a richiesta senza bussola di riduzione

 **C) Motor flange holes position**
Posizione fori flangia motore

Lubrication

Lubrificazione

Unit 211D is supplied with synthetic oil to assure long life lubrication.
Food grade oil is available on request.

See Table 1 for lubrication and recommended quantity.

See Table 2 for possible radial and axial loads on the gearbox.

Il riduttore tipo 211D viene fornito con olio sintetico e lubrificazione tipo "long life".

Disponibile a richiesta olio alimentare.

Vedi Tabella 1 per oli e quantità consigliati.

Vedi Tabella 2 per i carichi radiali e assiali applicabili al riduttore.

**Oil quantity for
all positions:
0.05 L**

Quantità olio per tutte
le posizioni: 0.05 L

Shell
Omala S4 WE 320

Eni
Telium VSF 320

Radial and axial loads

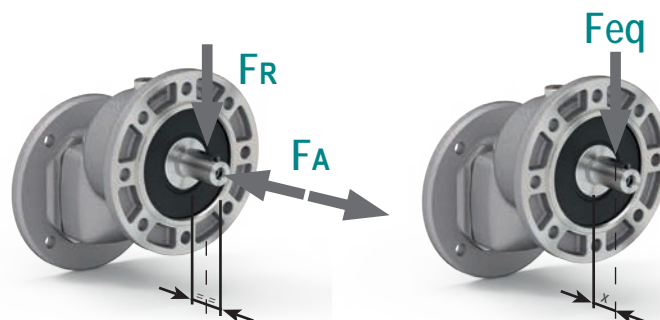
Carichi radiali e assiali

Output shaft

Albero di uscita

n_2 [min ⁻¹]	FA [N]	FR [N]
700	101	504
600	120	600
400	138	696
300	151	756
200	175	876
140	192	960

$$F_{eq} = F_R \cdot \frac{34.5}{X + 19.5}$$



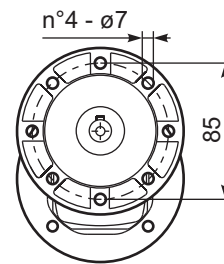
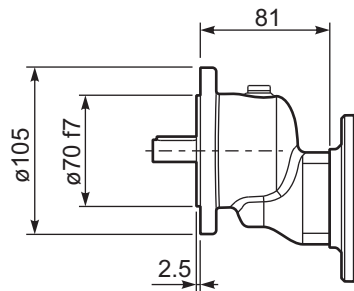
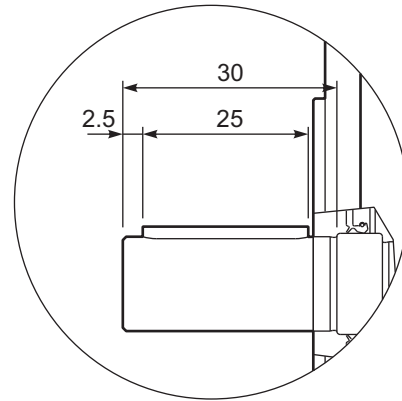
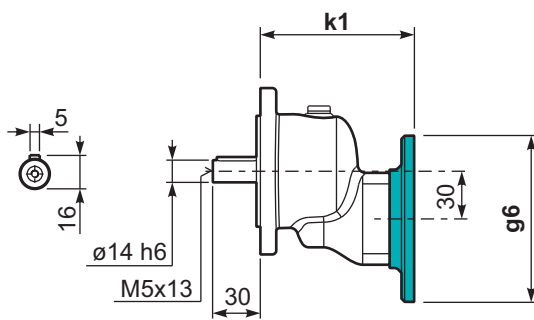
Tab. 1

Tab. 2

P211D-F... **Basic gearbox**
Riduttore base

Gearbox weight 1.40 kg
Peso riduttore

M. flanges	Kit code	k1	g6
63 B5	KD454041	99.5	138
71 B5	KD454042	97	160
56 B14	KD454049	97	80
63 B14	KD454047	99.5	90
71 B14	KD454045	97	105



R211D-F... **Basic gearbox**
Riduttore base

kit cod. KC355061

