

Input speed (n_1) = 1400 min⁻¹

Output speed n_2 [min ⁻¹]	Ratio i	Motor power P_{1M} [kW]	Output torque M_{2M} [Nm]	Service factor $f.s$	Nominal power P_{1R} [kW]	Nominal torque M_{2R} [Nm]	B5 motor flanges				B14 motor flanges			Dynamic efficiency RD	Tooth module [mm]	Ratio code
							-C 71	-D 80	-E 90	-F 100 112	-R 80	-T 90	-U 100 112			
200	7	4.0	168	1.5	6.1	257		B	B		B	B		88	4.23	01
140	10	4.0	218	1.3	5.2	284		B	B		B	B		80	4.2	02
100	14	3.0	223	1.4	4.1	305		B	B		B	B		78	4.5	03
70	20	2.2	237	1.2	2.7	294		B	B		B	B		79	3.4	04
64	22	2.2	258	1.1	2.5	294		B	B		B	B		78	3.1	05
50	28	2.2	315	1.1	2.4	347		B	B		B	B		75	4.7	06
37	38	1.5	276	1.2	1.8	336	B	B			B			71	3.5	07
30	46	1.5	320	1.0	1.5	326	B	B			B			68	3.1	08
27	52	1.1	258	1.1	1.2	289	B	B			B			66	2.7	09
21	67	1.1	327	0.9	0.97	289	B	B			B			65	2.1	10
18.9	74	0.75	220	1.2	0.91	268	B	B			B			58	1.9	11
14.6	96	0.55	191	1.3	0.70	242	B	B			B			53	1.5	12

Motor flanges available
Flange motore disponibili



B) Supplied with reduction bushing
Fornito con bussola di riduzione



B) Available on request without reduction bushing
Disponibile a richiesta senza bussola di riduzione



C) Motor flange holes position
Posizione fori flangia motore

Lubrication

Lubrificazione

Unit D85 is supplied with synthetic oil to assure long life lubrication. Food grade oil is available on request. See Table 1 for lubrication and recommended quantity. See Table 2 for possible radial and axial loads on the gearbox.

Il riduttore tipo D85 viene fornito con olio sintetico e lubrificazione tipo "long life". Disponibile a richiesta olio alimentare. Vedi Tabella 1 per oli e quantità consigliati. Vedi Tabella 2 per i carichi radiali e assiali applicabili al riduttore.

Oil quantity for all positions:
1.20 L

Quantità olio per tutte le posizioni: 1.20 L

Shell
Omala S4 WE 320

Eni
Telium VSF 320

Tab. 1

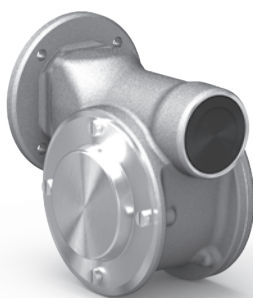
Suggested

Suggerito

Stainless steel protection cap (on request).

Coperchio di protezione in acciaio inox a richiesta.

Kit cod. KN850209



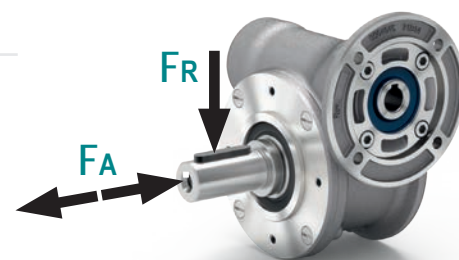
Radial and axial loads

Carichi radiali e assiali

Output shaft

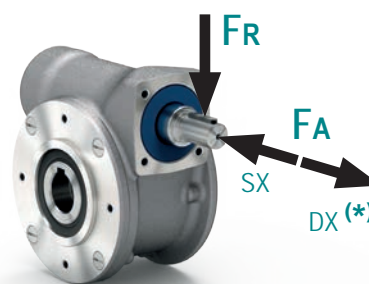
Albero di uscita

n_2 [min ⁻¹]	FA [N]	FR [N]
200	500	2500
150	580	2900
100	600	3000
75	700	3500
50	800	4000
25	1000	5000
15	1160	5800



Input shaft

Albero in entrata



n_1 [min ⁻¹]	FA [N]	FR [N]
1400	130	650

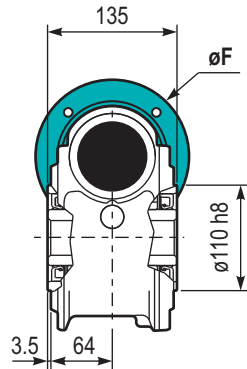
* Strong axial loads in the DX direction are not allowed.

* Non sono consentiti forti carichi assiali con direzione DX

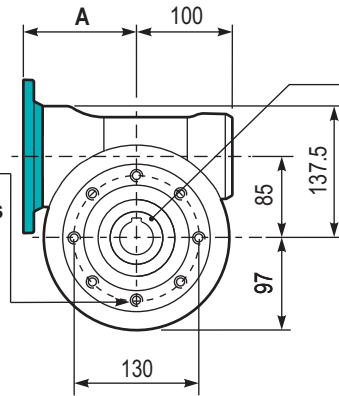
Tab. 2

PD85 **UNI..** Basic gearbox
Riduttore base

M. flanges	Kit code	øF	A
71B5	KD234041	160	116.5
80/90B65	KD234042	200	118.5
100/112B5	KD234043	250	127.5
80B14	KD854046	120	118.5
90B14	KD854045	140	118.5
100/112B14	KD854047	160	127.5

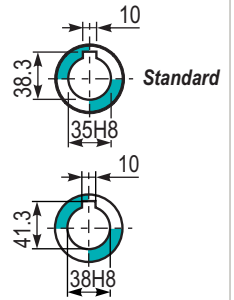


8 holes M10x18
Mounting holes position
Posizione fori di montaggio



Gearbox weight
Peso riduttore 11.00 kg

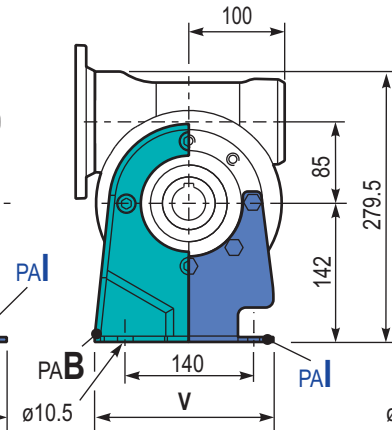
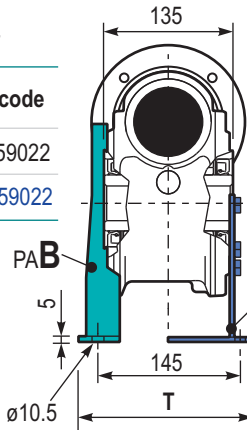
Hollow shaft
Foro in uscita



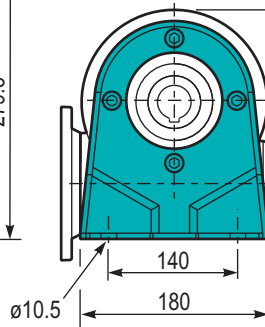
PD85 **PA...** Feet
Piedini

Type	T	V	Kit code
B**	182	180	K0859022
I*	176	172	KN859022

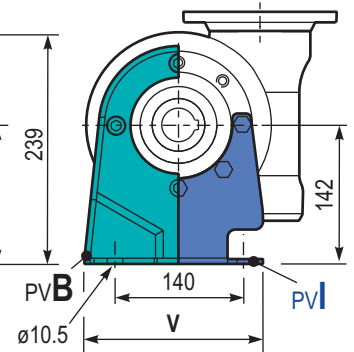
** Zink plated
* Stainless steel



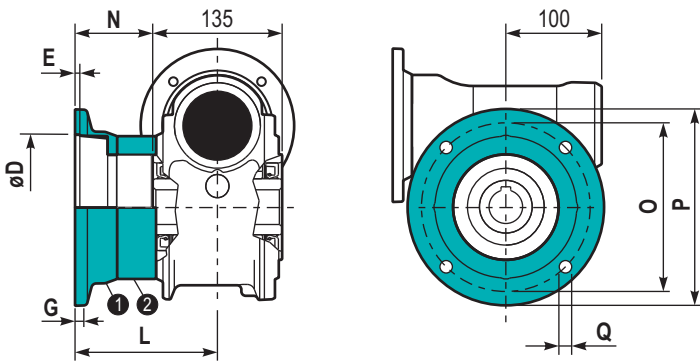
PD85 **PBB..** Feet
Piedini



PD85 **PV...** Feet
Piedini

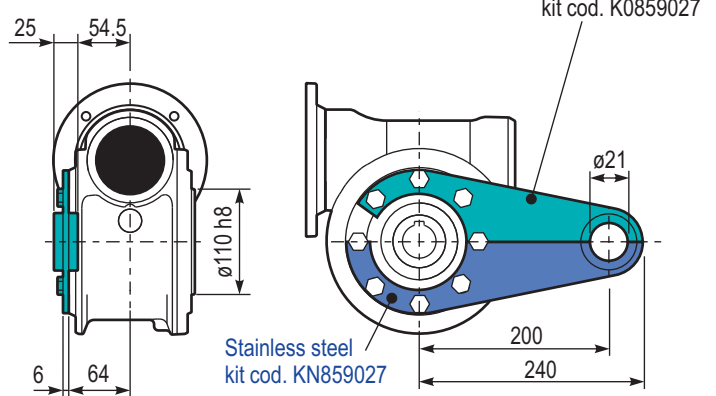


PD85 **FL..** Output flange
Flangia uscita



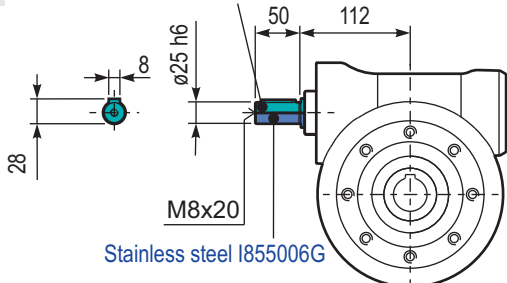
Type	øD	E	G	L	N	O	P	Q	Kit code
C	152 ^{+0.06} / _{-0.00}	5	16	108	40.5	176	205	13	① K0859010 ② -
L	152 ^{+0.06} / _{-0.00}	5	16	148.5	81	176	205	13	① K0859010 ② K0850201

PD85 **BR...** Reaction arm
Braccio di reazione



RD85 **UNI..** Input shaft
Albero in entrata

Carbon steel kit cod. K0855007 PAM90
Carbon steel kit cod. K0855008 PAM100



PD85 **SMK** Single output shaft
Albero semplice in uscita

kit cod. KN850209
Protection cap (on request)
A richiesta coperchio di protezione

